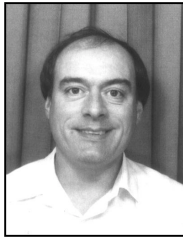


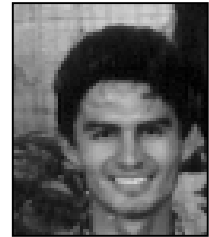
## **Aims of the International Graphonomics Society (IGS)**

During the second international graphonomics conference in 1985, the decision was made to establish the International Graphonomics Society (IGS). The general aims of the IGS are the advancement of research in the field of graphonomics. These aims include an exchange of views and expertise, joint-project research, and the dissemination and application of knowledge wherever appropriate. Some means to achieve these goals are: the organization of conferences and workshops and the publication of their proceedings, the stimulation of communication and research contacts by any other means, the transmission of information through a regular bulletin (BIGS), an electronic list (Scrib-L) and the maintenance of a graphonomics research directory. The IGS has the status of a legal non-profit organization. It was established as a foundation ('stichting') under the law of the Netherlands on January 30<sup>th</sup> 1987.

**BIGS:** Bulletin of the IGS (ISSN 1560-3253) is published bi-annually, in April and in November, by the International Graphonomics Society, Department of Experimental Psychology, University of Nijmegen, P.O. Box 9104, 6500 HE Nijmegen, The Netherlands (+31.24.361.2632 /26 33). It contains information relevant to the Society including book reviews, research papers, and conference calls. Responsibility for the contents rests upon the authors and not upon the Society, or its members. Copyright and Reprint Permissions. Abstracting is permitted with credit to the source. For all other copying, reprint, or republication permission, write to the IGS Office (Secretarial Assistant: Mrs Marianne Stienen, email: [m.stienen@nici.kun.nl](mailto:m.stienen@nici.kun.nl)). BIGS is distributed among IGS Members. Printed in Singapore.



## From the Editors



In BIGS 15,1, the 29<sup>th</sup> Bulletin of the International Graphonomics Society, we report on the latest information about the IGS2001 conference and provide some further information about publications and future conferences of interest to IGS members. We also include the financial overview of IGS for last year.

You will observe that we have fewer contributions in this issue than in previous issues. Despite our call for contributions in previous editions and email requests we, as editors, have found it difficult to obtain contributions for this issue. Could it be that BIGS does not meet the requirements and interests of the IGS members?

At IGS2001 in August we will distribute a questionnaire and invite discussion on the future content and distribution of BIGS. In the meantime, if you have any suggestions of what you would like to see in future issues of BIGS, how you would like it distributed or have any other suggestion or input to make it more interesting and relevant to readers we would like to hear from you. The deadline for contributions to the next issue of BIGS is 15<sup>th</sup> October 2001.

We look forward to seeing many of you again in Nijmegen.

Graham Leedham  
School of Computer Engineering  
Nanyang Technological University  
N4-2C-77 Nanyang Avenue  
Singapore 639798  
Email: [asgleedham@ntu.edu.sg](mailto:asgleedham@ntu.edu.sg)

José L. Contreras-Vidal  
Department of Kinesiology  
University of Maryland  
College Park  
MD 20742  
USA  
Email: [pepeum@wam.umd.edu](mailto:pepeum@wam.umd.edu)

## Message from the IGS President



Dear IGS members,

In a few months from now, we will meet for our 10th biennial conference. You have probably just submitted the paper(s) you intend to submit for presentation and some of you might have already started planning a vacation in the Netherlands, which I strongly recommend. Apart from its main themes dealing with motor disorder as well as its regular topics, I would like to take the opportunity of this 10th conference to briefly look back at the progress we have made in the various domains of interests of our society as well as exchanging on the future trends in handwriting research. To do so, we will organize a panel: *It was twenty years ago today!* A few invited speakers will be asked to make a survey and prospective of the evolution of a specific field. These short presentations will serve as seed ideas for starting a discussion among the audience. The minutes of the various key points of this think tank operation will be summarized in a forthcoming issue of BIGS .

If this idea sounds interesting to you, I kindly ask you to contact me in the forthcoming weeks for suggestions of themes, and panelists. We will then proceed with the organization of the event.

Finally, I am reminding you that some IGS board members will complete their terms this year and will have to be replaced. For those of you that would like to serve on the board, please inform our secretary, professor Ruud Meulenbroek, prior to the conference.

Looking forward to meeting you at Nijmegen.

Best regards,

Réjean Plamondon,  
President of IGS

---

**Update on IGS 2001**  
10th Biennial Conference of  
The International Graphonomics Society  
6-8 August 2001  
University of Nijmegen, The Netherlands



**Final Update through BIGS**

This is the final update through BIGS on our next IGS Conference at the University of Nijmegen, The Netherlands, 6-8 August 2001. The preparations of the meeting are going according to plan.

**Invited speakers**

The organising committee is very pleased to announce that Professor Mark Latash (Pennsylvania State University, State College, USA) and Professor Andrew Schwartz (Motor control lab at The Neurosciences Institute, San Diego, USA) have accepted our invitation to give a keynote lecture at IGS 2001. Mark Latash and Andrew Schwartz are well-known specialists in the areas of motor control and neuroscience. Additionally, they have outstanding views and earlier contributions to the area of motor disorders. Their planned presentations at the conference are very promising. You can find more information about the invited speakers on the Conference Website at: [www.socsci.kun.nl/psy/igs/igs\\_2001](http://www.socsci.kun.nl/psy/igs/igs_2001).

**New Paper submission deadline**

The paper submission deadline has been postponed until **15 April 2001**. The important dates of the conference are:

Paper submission	<b>15 April, 2001</b>
Notification of acceptance	31 May, 2001
Camera-ready papers and registration	1 July, 2001
Conference *	6-8 August, 2001

\* Note that between 5 and 8 p.m. on Sunday, August 5th, a Welcome Buffet will be held in the Conference Auditorium.

**Welcome buffet and how to find your way to the campus**

On Sunday evening (5-8 p.m.), August 5th, a welcome buffet will be held in the University's Auditorium and Conference Centre. The Auditorium is situated on the campus (Comeniuslaan 2). A map helping you how to find your way in Nijmegen plus a ticket providing you free transport on local buses during the three-day period of IGS 2001, will be sent to you following registration. On-site registration facilities will be possible between 5-8 p.m. on Sunday evening, August 5th.

## Conference Website

Further updates on IGS 2001 will be given through the Conference Website on the Internet at: [www.socsci.kun.nl/psy/igs/igs\\_2001](http://www.socsci.kun.nl/psy/igs/igs_2001). Between February 28, 2000 and March 14, 2001 the Website was visited 627 times. It contains all information relevant to IGS 2001 such as the Call For Papers, Authors' Guide (including a preformatted paper), Registration Form, and Hotel Reservation Form. If you prefer to receive hard copies of these forms, please contact Marianne Stienen at the Conference Secretariat (address below).

### Secretariat and Agency

PAPER SUBMISSIONS  
IGS 2001 Secretariat  
Marianne Stienen  
NICI - University of Nijmegen  
P.O. Box 9104  
6500 HE Nijmegen  
The Netherlands  
Tel: +31.24.361.2633  
Fax: +31.24.361.6066  
E-mail: [IGS2001@nici.kun.nl](mailto:IGS2001@nici.kun.nl)

REGISTRATION & HOTEL RESERVATION  
Conference Agency  
Mary Bluysen and Jacqueline Berns  
Conference Agency - University of Nijmegen  
P.O. Box 9111  
6500 HN Nijmegen  
The Netherlands  
Tel: +31.24.361.2184  
Fax: +31.24.356.7956  
E-mail: [M.Bluysen@bureau.kun.nl](mailto:M.Bluysen@bureau.kun.nl)

### Related conference

We remind you of the fact that 'The 5th International Congress of the GFS' ('Gesellschaft für Forensische Schriftuntersuchung') will be held from June 13-16, 2001, at Bingen on Rhine in Germany. The scientific program includes lectures, discussions and workshops on various topics of forensic document examination. For more information, please contact Dr. Peter Baier (E-mail: [PEBaier@aol.com](mailto:PEBaier@aol.com)).

### Social program of IGS 2001

Both for the delegates and accompanying persons the social program is taking shape. A visit to a famous Kröller-Müller museum of Modern Art in The Netherlands that is situated in a nearby National Park will be followed by the Conference Banquet in a renovated 14th-century Manor House just outside Nijmegen. If you have any questions regarding your contribution to IGS 2001 do not hesitate to contact us via the conference email address: [igs2001@nici.kun.nl](mailto:igs2001@nici.kun.nl). For questions regarding travel and accommodation arrangements, please contact Mary Bluysen of the Conference Agency at [M.Bluysen@bureau.kun.nl](mailto:M.Bluysen@bureau.kun.nl).

We are looking forward to meeting you all at IGS 2001 in Nijmegen!

March 15th, 2001  
Ruud Meulenbroek, Chair IGS 2001  
NICI, University Nijmegen

---

## IGS MEMBERSHIP

### ***New IGS Member***

We welcome the following new member as from January 2001:

Dr. K.J.Bar  
Document Evidence Ltd.  
Gatsby Court  
172 Holliday Street  
Birmingham B1 1TJ  
UK  
Phone: 0121 643 0990  
Fax: 121 633 0288  
Fields: ai bp cgs cos ed en ep fs

### ***New IGS Membership Directory***

Enclosed with this issue of BIGS is the 2001 Membership directory.

### ***IGS Membership Dues***

The IGS office kindly reminds IGS members who have not already done so, to effectuate their membership dues for the current year 2001 by following the instructions specified on the payment slip enclosed in this BIGS mailing. Please note that any reductions which the IGS may obtain with respect to, for example, publications following IGS conferences, will only apply to paying members.

### ***Important message Credit Card Payments***

Credit card payment leaflets will be effectuated twice a year, namely in the first week of January of each year and in the first week of June of each year. Consequently, when you pay your IGS membership dues by means of a credit card payment, please note *that your credit card payment will be effectuated either in January or in June.*

As of April 1 this year, several credit card companies require, in addition to the name of the cardholder, card number, expiration date, postal code and transaction date also the *Card Validation Code (CVC)*. Without this code we are unable to effectuate your payment. We kindly request members who have not filled out the payment leaflet yet or sent us a payment leaflet after March 15, to fill out the adjusted leaflet enclosed in this BIGS issue and send it (again) to the IGS office. Thank you for your co-operation.

## FINANCIAL OVERVIEW IGS, 2000

### 1. Guilders account (NLG)

#### *Credit*

Balance on 01-01-00		NLG 13,156.56
Membership dues	3,470.12	
Bank Interest	38.07	
IGS Proceedings	736.60	
NTU Singapore	1,651.13	
		<u>5,895.92</u>
Total credit in guilders		NLG 19,052.48

#### *Debit*

BIGS printing and shipment costs	1,386.69	
Bank charges	259.90	
IWCHM 2000	2,450.00	
Chamber of Commerce	64.99	
Total expenses in guilders		4,161.58
Credit balance on 12-31-00		NLG 14,890.90

### 2. Dollars account (USD)

#### *Credit*

Balance on 01-01-00		USD 6,196.65
Membership dues	99.00	
Bank interest	60.83	
		<u>159.83</u>
Total credit in USD USD		6,356.48

#### *Debit*

Total expenses in dollars		<u>0.00</u>
Credit balance on 12-31-00		USD 6,356.48

On 31st December 2000, the mean exchange rate was USD 1.00 = NLG 2.3404. This results in a total credit balance, per 31st December 2000, of NLG 14,890.90 plus  $2.3404 \times 6,356.48 = \text{NLG } 29,767.61$ , or equivalently  $6,356.48 \text{ USD plus } 1/2.3404 \times 14,890.90 = \text{USD } 12,719.02$ .

Nijmegen, 22 January 2001  
Ruud Meulenbroek

---

## World Handwriting Achievement Competition (WHAC)

Do you like handwriting?  
Do you do it well?  
Would you like to win a prize for it?

If so, take a look at the World Handwriting Achievement Competition (WHAC) formerly the USA-only Annual American Handwriting Competition: AAHC. The competition opens 1-January-2001; its web-page has now gone up at <http://www.global2000.net/handwritingrepair/WHAC> You can also access the WHAC web-page from my web-site at <http://www.global2000.net/handwritingrepair> : there, either use the "NEW NOW!" link at the top of the page, or just go to the bottom of the page and look in the navigation-bar for "World Handwriting Achievement Contest".

Have fun! - and Happy Writing!

Yours for better letters

Kate Gladstone - Handwriting Repair  
*kate@global2000.net,*  
*kate@WriteMe.com,*  
*<http://www.global2000.net/handwritingrepair>*  
*325 South Manning Boulevard*  
*Albany, NY 12208-1731*  
*518/482-6763*

## RECENT PUBLICATIONS

Schenk T, Mai N., Is writer's cramp caused by a deficit of sensorimotor integration?  
*Exp Brain Res.* 2001 Feb;136(3):321-30.

Miller LT, Missiuna CA, Macnab JJ, Malloy-Miller T, Polatajko HJ., Clinical description of children with developmental coordination disorder., *Can J Occup Ther.* 2001 Feb;68(1):5-15.

Smith JM, Farrington CA., It ain't what you say.... legibility and clarity of treatment records., *Dent Update.* 2000 Oct;27(8):384-6.

King RN, Koehler DJ., Illusory correlations in graphological inference., *J Exp Psychol Appl.* 2000 Dec;6(4):336-48.

Grossberg S, Paine RW., A neural model of cortico-cerebellar interactions during attentive imitation and predictive learning of sequential handwriting movements. *Neural Netw.* 2000 Oct-Nov;13(8-9):999-1046. [MEDLINE record in process] PMID: 11156206

Donawa M., US requirements for electronic records and signatures., *Med Device Technol.* 2000 Nov;11(9):30-3. No abstract available.



Kandel S, Orliaguet JP, Boe LJ., Detecting anticipatory events in handwriting movements., *Perception*. 2000;29(8):953-64.

Blank R, Miller V, von Voss H., Human motor development and hand laterality: a kinematic analysis of drawing movements., *Neurosci Lett*. 2000 Dec 8;295(3):89-92.  
Chee MW, Weekes B, Lee KM, Soon CS, Schreiber

A, Hoon JJ, Chee M., Overlap and dissociation of semantic processing of Chinese characters, English, words, and pictures: evidence from fMRI., *Neuroimage*. 2000 Oct;12(4):392-403.

Feder K, Majnemer A, Synnes A., Handwriting: current trends in occupational therapy practice., *Can J Occup Ther*. 2000 Jun;67(3):197-204.

## **FORTHCOMING PUBLICATIONS**

Following IGS99, a number of authors were invited to submit papers for publication in a Special Issue of the journal, *Pattern Recognition* with Guest Editors, Graham Leedham, Wacef Guerfali and Rejean Plamondon. After extensive review the following eight papers have been accepted for publication and will appear in an issue of journal to be published later in 2001.

De Stefano C., Della Cioppa A., and Marcelli A., Learning handwriting by evolution: a conceptual framework for performance evaluation and tuning

Xiao X., Leedham C. G., Signature verification using a modified Bayesian network

Rahman A. F. R., Rahman R., and Fairhurst M. C., Recognition of handwritten Bengali characters: a novel multistage approach

Chan K. H., An off-line oriental character recognition system (OOCRS): synergy of distortion modelling, hidden markov models and vector quantisation

Bouwhuisen C. F., Meulenbroek R. G. J. and Thomassen A. J. W. M., A 3D motion-tracking method in graphonomic research: possible applications for future handwriting recognition studies

Djeziri S., Guerfali W., Plamondon R., and Robert J. M., Learning handwriting with pen-based systems: computational issues

Remi C., Frelicot C., and Courtellemont P., Automatic analysis of the structuring of children's drawings and writing

Tang Y. Y., Tao Y., and Lam E. C. M., New method for feature extraction based on fractal behaviour

Authors will be informed as soon as a publication date is confirmed.

---

## FORTHCOMING CONFERENCES

### The 5th International Congress of the GFS ('Gesellschaft für Forensische Schriftuntersuchung')

This conference will be held from 13–16 June, 2001, at Bingen on Rhine in Germany. The scientific program includes lectures, discussions and workshops on various topics of forensic document examination. For more information, please contact Dr. Peter Baier (E-mail: [PEBaier@aol.com](mailto:PEBaier@aol.com)).

### IGS 2001

The 10th Biennial Conference of The International Graphonomics Society will be held on the 6-8 August 2001 at the University of Nijmegen, The Netherlands (see *details in this copy of BIGS*)

Website: [http://www.socsci.kun.nl/psy/igs/igs\\_2001](http://www.socsci.kun.nl/psy/igs/igs_2001)

Submission of papers: 15 March 2001

### ICDAR 2001

The 6th International Conference on Document Analysis and Recognition will be held 10–13 September, 2001 in Seattle, Washington, USA

Website: <http://isl.wtc.washington.edu/ICDAR01/index.html>

Submission of papers: 15 February, 2001

### CIMA'2001

Computational Intelligence, Methods and Applications

Website: <http://www.icsc.ab.ca/cima2001.htm>

The second International ICSC Congress on COMPUTATIONAL INTELLIGENCE: METHODS & APPLICATIONS (CIMA 2001) will be held on 19–22 June, 2001 in Bangor, Wales, UK. CIMA 2001 will include four symposia and the Granular Computing workshop:

- Fuzzy Logic and Applications FLA 2001 <http://www.icsc.ab.ca/171-info.htm>

- Advances in Intelligent Data Analysis (AIDA 2001) <http://www.icsc.ab.ca/172-info.htm>

- Advanced Computing in Bio Medicine (ACBM 2001) <http://www.icsc.ab.ca/173-info.htm>

- Advanced Computing in the Financial Market (ACFM 2001)  
<http://www.icsc.ab.ca/175-info.htm>

- Granular Computing Workshop (GcC 2001) <http://www.icsc.ab.ca/175-info.htm>

Submission of papers: 30<sup>th</sup> November, 2000

Delivery of Full Paper and Registration Deadline: February 15, 2001

### **IWFHR 8**

The eighth International Workshop on Frontiers in Handwriting Recognition will be held from 6–8 August 2002 in Niagara-on-the-Lake, Ontario, Canada Website: <http://www.cedar.buffalo.edu/IWFHR-8/>  
Submission of papers: 15<sup>th</sup> October 2000

### **ICPR2002**

The 16 International Conference on Pattern Recognition will be held from 11–15 August, 2002 in Quebec City , Quebec, Canada  
The theme of the conference will be "Pattern Recognition for Mankind and the Environment" and the conference will be held in four tracks:  
Track 1 Computer Vision and Robotics  
Track 2 Pattern Recognition, Neural Networks, and Document Analysis  
Track 3 Image and Signal Processing  
Track 4 Biomedical and Multimedia Applications  
Website: <http://icpr2002.gel.ulaval.ca/>  
Submission of papers: December 2001.

### **NEURO-FUZZY NF'2002**

will be held at The Capitolio de la Habana, Cuba January 15-18, 2002

Website: <http://www.icsc.ab.ca/NF2002.htm>

### **IMPORTANT DATES**

Submission Deadline:	May 31, 2001
Notification of Acceptance:	August 15, 2001
Delivery of Final Manuscripts:	October 31, 2001
Conference NF'2002:	January 15/18, 2002

Topics suggested (not limited to):

- Advanced Neuro and Fuzzy Paradigms
- Data Granulation and Fuzzy Rule Extraction
- Advanced Training Algorithms
- Evolutionary Computation (GA, GP, ET) and Graphical Models
- Chaotic Behavior and Fractals
- 

Of particular interest are applications from the following fields: Sound and image processing, pattern recognition, image understanding, feature binding, perception, sensor fusion, controller design, state observation, motor control, mobile robotics, autonomous navigation, deliberation and planning, active anchoring, gain-scheduling, fault detection, hardware solutions, data mining, financing, e-commerce.

### **SUBMISSION OF PAPERS**

Authors are requested to send an extended abstract, or the full paper of Minimum 4 and maximum 7 pages for review, by the International Program Committee. All submissions must be written in English, starting with a succinct statement of the

problem, the results achieved, their significance and a comparison with previous work.

### **AUTONOMOUS INTELLIGENT SYSTEMS ICAIS 2002**

Deakin University, Geelong Campus, Australia  
February 12-15, 2002  
Website: <http://www.icsc.ab.ca/icais2002.htm>  
Submission deadline: June 30, 2001

### **INTELLIGENT SYSTEMS AND APPLICATIONS ISA 2002**

Shanghai Jiao Tong University, Shanghai, China  
December 15-18, 2002  
Website: <http://www.icsc.ab.ca/isa'2002.htm>  
Submission deadline: February 28, 2002

### **GREC 2001 CALL FOR PAPERS**

Fourth IAPR International Workshop on Graphics Recognition  
Kingston, Ontario, Canada, September 7-8, 2001  
Website: <http://www.cs.queensu.ca/grec2001>  
Abstracts Due March 1, 2001

Graphics recognition is a branch of document image analysis that focuses on the recognition of diagram notations, including engineering drawings, maps, mathematical notation, music notation, tables, and chemical structure diagrams. There is great demand for automatic conversion between paper and electronic forms of documents. Graphics recognition is an essential component of this conversion. GREC workshops are published in Springer's Lecture Notes in Computer Science (previous workshops in Volumes 1072, 1389, 1941). GREC 2001 precedes ICDAR 2001 (Sixth International Conference on Document Analysis and Recognition, Seattle, Sept. 10-13).

### **The 10th IEEE International Conference on Fuzzy Systems (FUZZ-IEEE 2001) December 2-5, 2001, The University of Melbourne, Melbourne, Australia**

Website: <http://www.csse.melbourne.edu/FUZZ-IEEE2001>  
Students: Partial travel scholarships are available from the IEEE Neural Network Council. Please check  
[http://www.arc.unm.edu/~karen/IEEE\\_NNC/Student\\_Travel\\_Grants/](http://www.arc.unm.edu/~karen/IEEE_NNC/Student_Travel_Grants/)

#### **IMPORTANT DATES:**

Paper submission Friday, 2 March 2001  
Notification of acceptance Friday, 1 June 2001  
Final manuscripts Friday, 3 August 2001

---